



Independent Living Alliance

Contacts & Further Information

Referrals

To make a referral or for details of vacancies in any of our services contact:

Gail Churchill
Placement Manager

Tel: 0151 708 2940
Mobile: 07811 133 251

gail@ila.uk.com



ILA's Brochure includes full details of our referral and assessment procedures and other essential information ...

Service Development and Marketing

To discuss service requirements contact:

Karen Jennings
Senior Operations Manager

Tel: 0151 708 2940
Mobile: 07811 133 244
karen@ila.uk.com

Sam Brennan
Operations Manager

Tel: 0151 708 2940
Mobile: 07811 133 248
samantha@ila.uk.com

Marketing

For marketing issues contact:

Shirley Rawlings
Marketing Manager

Tel: 0151 708 2940
Mobile: 07500 331 253

shirleyr@ila.uk.com

... the Brochure can be obtained from any of the contacts on this page. It is available in the following formats:

- Paper
- PDF (on CD)
- PDF (via email)



The Independent Living Alliance Ltd: Company number 04036447
Care Quality Commission Service No: 0000065446

www.ila.uk.com



Independent Living Alliance

Summer 2009

Work Experience Programme



Lisa Baker

Service User Development Worker, Lisa Baker, was appointed in April with a brief to find work experience opportunities for ILA's service users.

So far, Lisa has supported **ten** people in work experience posts within ILA Placements include:

- Catering,
- Reception
- Caretaking.



Service users start as



volunteers with an option to progress to paid employment. They receive full training (including accredited food hygiene and Health & Safety training) and on-the-job support as required.

"Our Aim is ...

... to be the first choice of people with Learning Disabilities, Mental Health issues or Complex needs when they, their families or care managers are selecting their support services"

Our services include:

- Supported housing
- Move-on accommodation
- Domiciliary care
- Floating support

We are accredited with a number of local authorities in the Northwest, including:

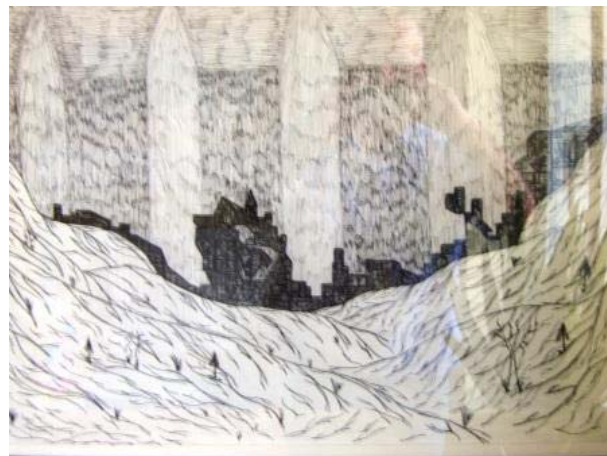
- Bury
- Liverpool
- Manchester
- Sefton
- St Helens
- Warrington
- Wigan
- Wirral

ILA provides person-centred and outcome-focused support. We are committed to and actively participating in the personalisation agenda.

www.ila.uk.com

Art Extra

Some of the entries in ILA's Recent Art Competition



Through competitions, showcase events and art activities, ILA encourages service users to develop their creativity, as a means of enhancing their self-esteem and self confidence.



ILA is playing a leading role in encouraging **Studio Upstairs**, an independent, voluntary sector organisation based in London and Bristol, to open a project - in Liverpool - where people with mental health needs will be able to work alongside practising artists and art therapists in a unique combination of art education and therapeutic practice.

For more information on Studio Upstairs: www.studioupstairs.org.uk

www.ila.uk.com

Activity Programme

Lisa Baker, Service User Development Worker, is overseeing an activity programme from ILA's newly refurbished head office in Greenland Street. Service users have not only suggested many of the activities but, in some cases, are running their own sessions.

The current programme includes:

- Art
- Baking
- Bingo
- Board games
- Card making
- Crafts days
- Days out
- Glass sticker making
- Pamper day
- Wii Fit sessions

Service User Inclusion

ILA's well-established area-based service user inclusion groups meet regularly. Each group elects representatives to the overarching service users' committee.



Through the inclusion structure, our people are active participants in reviews of their own services and organisational policy development.

Full training is provided to enable each person to fulfil their role effectively.

www.ila.uk.com

Latest News

Warrington: ILA will be opening a 5-bed service for women with complex needs in the Walton area in the autumn.

Manchester: our specialist supported housing service now accepts referrals for **young people in transition** .

Wigan: ILA is now an approved provider of Learning Disability services within Wigan's new Framework Agreement.

Liverpool:

- Two new flats have opened in Garston to provide permanent move-on accommodation for supported housing tenants.
- The new training room and training kitchen in ILA's head office are now fully operational

Bury: ILA has recently become an Approved Provider for Bury Metropolitan Borough Council.

Housing management: Following a major exercise involving landlords and income maximisation teams, ILA has become the managing agent for all supported housing properties. This has produced major benefits for tenants, including a higher disposable income for most plus improved standard of accommodation and fittings.